

ReneSola

ReneSola Pitched Tin Roof Solar Racking System

The most economical and efficient solar roof mounting system for residential buildings. It can be easily applied on the pitched roofs with Corrugated or trapezoidal tin sheets. With the concise design and high quality materials, ReneSola Pitched Tin Roof Solar Racking System is your best choice.



Handy Installation:

Thanks to the concise design and strict quality control, this system can be quickly and easily installed on the roof.



Extensive Flexibility:

This System is compatible with any sizes of framed modules in the market, especially with ReneSola's modules and micro-inverter;



Great Durability:

All the parts are made of high quality stainless steel and aluminum with anodized finish which are great at corrosion resistance and can provide durable service life in outdoor environment;



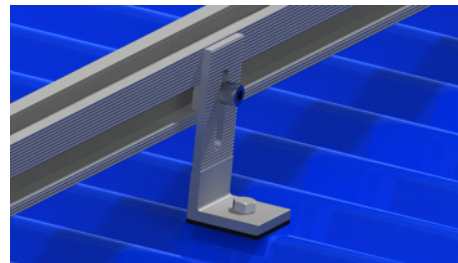
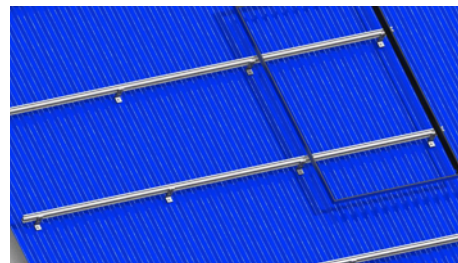
Excellent Adaptability:

With the universal L-foot bracket, the system can be applied on most pitched tin roofs with corrugated and trapezoidal tin sheets



10 Years Warranty:

ReneSola provides 10 years warranty for the material and workmanship.



Installation site	Pitched tin roof
Roof slope	Up to 60°
Roof cladding	Corrugated or trapezoidal tin roof
Building height	Up to 20m
Max wind speed	60 m/s
Max snow load	1.4 KN/M ²

Module type	Framed with any sizes
Module layout	Landscape and portrait
Materials	Stainless steel and Anodized Alu.
Standards	AS/NZS 1170, MCS012
Warranty	10 years





R-S1/length



SR-S1/200



C-SM/H35-45



C-SE



RB-CT/L



CS-CC/L20



GS-GP/SR

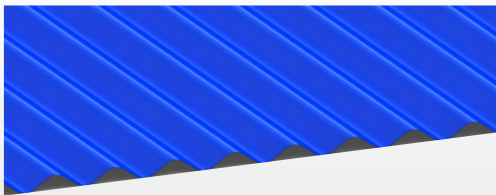


GS-GC/SR

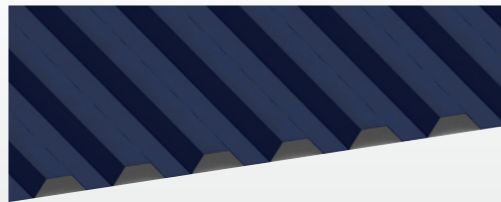
Part No.	Part Name	Description
R-S1/length	Standard Rail 1#	Supporting modules
SR-S1/200	Splice Group For Standard Rail 1#	Connect 2 standard rail 1#, 200mm length
C-SM/H35-45	Middle Clamp Group (H35-45)	Clamp modules of 35~45mm thickness
C-SE	End Clamp Group	Clamp modules at the end of rows
RB-CT/L	L-foot Group	Aluminium L bracket for pitched tin roof
CS-CC/L20	Cable Clip	Clamp DC wires onto module's frame(stainless steel)
GS-GP/SR	Grounding Plate I	Conduct the module's frames and rails
GS-GC/SR	Grounding Clip Group	Conduct Rails with copper wires

Note: We provide 3 standard lengths of the Standard Rail 1#: 2100mm, 3200mm, 4200mm. We can also provide any other customized lengths of the rail.

Application Site



Corrugated tin roof with wood structure



Trapezoidal tin roof with wood structure