

KuMax

HIGH EFFICIENCY POLY MODULE

CS3U-355 | 360 | 365 | 370 | 375 | 380 | 385P (IEC1000V)

CS3U-355 | 360 | 365 | 370 | 375 | 380 | 385P (IEC1500V)

MORE POWER



Low power loss in cell connection



Low NMOT: $42 \pm 3 \text{ }^\circ\text{C}$
Low temperature coefficient (Pmax): $-0.36 \text{ \% / }^\circ\text{C}$



Better shading tolerance

MBB

5BB



linear power output warranty*



enhanced product warranty on materials and workmanship*

*According to the applicable Canadian Solar Limited Warranty Statement.

MORE RELIABLE



Minimizes micro-crack impacts



Lower hot spot temperature



Heavy snow load up to 5400 Pa,
wind load up to 3600 Pa*

MANAGEMENT SYSTEM CERTIFICATES

ISO 9001:2015 / Quality management system
ISO 14001:2015 / Standards for environmental management system
OHSAS 18001:2007 / International standards for occupational health & safety

PRODUCT CERTIFICATES*

IEC 61215 / IEC 61730: VDE / CE / CQC / MCS / INMETRO
UL 1703 / IEC 61215 performance: CEC listed (US) / FSEC (US Florida)
UL 1703: CSA / IEC 61701 ED2: VDE / IEC 62716: VDE / IEC 60068-2-68: SGS
Take-e-way

Canadian Solar recycles panels at the end of life cycle.



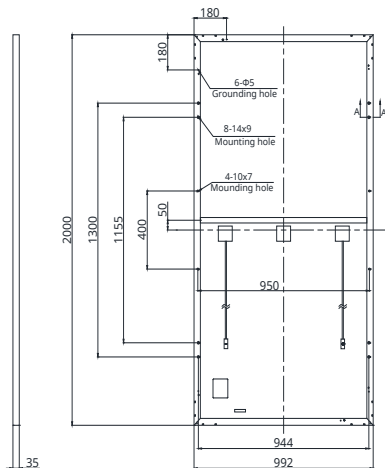
* As there are different certification requirements in different markets, please contact your local Canadian Solar sales representative for the specific certificates applicable to the products in the region in which the products are to be used.

CANADIAN SOLAR INC. is committed to providing high quality solar products, solar system solutions and services to customers around the world. No. 1 module supplier for quality and performance/price ratio in IHS Module Customer Insight Survey. As a leading PV project developer and manufacturer of solar modules with over 40 GW deployed around the world since 2001.

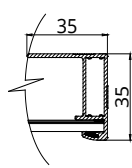
* For detailed information, please refer to the Installation Manual.

ENGINEERING DRAWING (mm)

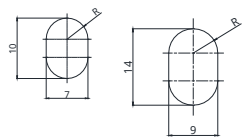
Rear View



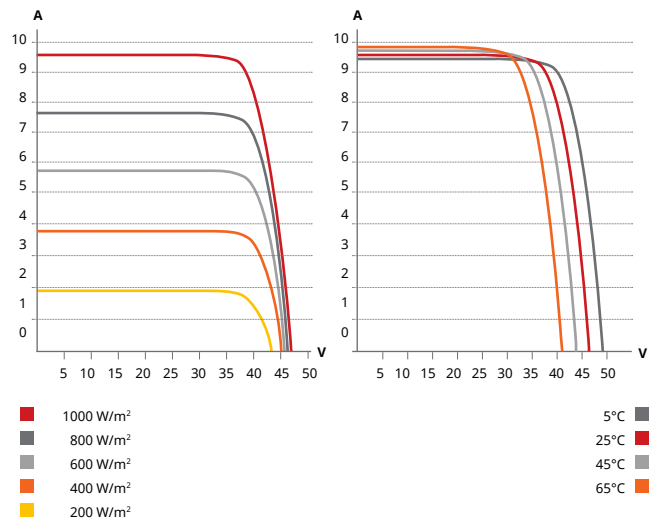
Frame Cross Section A-A



Mounting Hole



CS3U-365P / I-V CURVES



ELECTRICAL DATA | STC*

CS3U	355P	360P	365P	370P	375P	380P	385P
Nominal Max. Power (Pmax)	355 W	360 W	365W	370W	375W	380W	385W
Opt. Operating Voltage (Vmp)	39.4 V	39.6 V	39.8 V	40.0 V	40.2 V	40.4 V	40.6 V
Opt. Operating Current (Imp)	9.02 A	9.10 A	9.18 A	9.26 A	9.34 A	9.42 A	9.50 A
Open Circuit Voltage (Voc)	46.8 V	47.0 V	47.2 V	47.4 V	47.6 V	47.8 V	48.0 V
Short Circuit Current (Isc)	9.59 A	9.67 A	9.75 A	9.83 A	9.91 A	9.99 A	10.07 A
Module Efficiency	17.9%	18.2%	18.4%	18.7%	18.9%	19.2%	19.4%
Operating Temperature	-40°C ~ +85°C						
Max. System Voltage	1500V (IEC/UL) or 1000V (IEC/UL)						
Module Fire Performance	TYPE 1 (UL 1703) or CLASS C (IEC 61730)						
Max. Series Fuse Rating	30 A						
Application Classification	Class A						
Power Tolerance	0 ~ + 5 W						

* Under Standard Test Conditions (STC) of irradiance of 1000 W/m², spectrum AM 1.5 and cell temperature of 25°C. Measurement uncertainty: ±3 % (Pmax).

ELECTRICAL DATA | NMOT*

CS3U	355P	360P	365P	370P	375P	380P	385P
Nominal Max. Power (Pmax)	264 W	268 W	272 W	276 W	279 W	283 W	287 W
Opt. Operating Voltage (Vmp)	36.7 V	36.9 V	37.0 V	37.2 V	37.4 V	37.6 V	37.8 V
Opt. Operating Current (Imp)	7.21 A	7.27 A	7.34 A	7.40 A	7.46 A	7.53 A	7.59 A
Open Circuit Voltage (Voc)	44.0 V	44.1 V	44.3 V	44.5 V	44.7 V	44.9 V	45.1 V
Short Circuit Current (Isc)	7.74 A	7.80 A	7.87 A	7.93 A	7.99 A	8.06 A	8.12 A

* Under Nominal Module Operating Temperature (NMOT), irradiance of 800 W/m², spectrum AM 1.5, ambient temperature 20°C, wind speed 1 m/s.

* The specifications and key features contained in this datasheet may deviate slightly from our actual products due to the on-going innovation and product enhancement. Canadian Solar Inc. reserves the right to make necessary adjustments to the information described herein at any time without further notice. Please be kindly advised that PV modules should be handled and installed by qualified people who have professional skills and please carefully read the safety and installation instructions before using our PV modules.

CANADIAN SOLAR INC.

Canadian Solar MSS (Australia) Pty Ltd., 44 Stephenson St, Cremorne VIC 3121, Australia
 sales.au@canadiansolar.com, www.canadiansolar.com/au

MECHANICAL DATA

Specification	Data
Cell Type	Poly-crystalline
Cell Arrangement	144 [2 X (12 X 6)]
Dimensions	2000 X 992 X 35 mm (78.7 X 39.1 X 1.38 in)
Weight	22.5 kg (49.6 lbs)
Front Cover	3.2 mm tempered glass
Frame	Anodized aluminium alloy, crossbar enhanced
J-Box	IP68, 3 diodes
Cable	4 mm² (IEC), 12 AWG (UL)
Cable Length (Including Connector)	Portrait: 400 mm (15.7 in) (+) / 280 mm (11.0 in) (-); landscape: 1250 mm (49.2 in); leap-frog connection: 1670 mm (65.7 in)*
Connector	T4-PC-1 (IEC 1000 V) or PV-KST4/xy-UR, PV-KBT4/xy-UR (IEC 1000 V) or T4-PC-1 (IEC 1500 V) or T4-PPE-1 (IEC 1500 V) or PV-KST4-EVO2/XY, PV-KBT4-EVO2/XY (IEC 1500 V) or UTXCFA4AM, UTXC-MA4AM (IEC 1500 V)
Per Pallet	30 pieces
Per Container (40' HQ)	660 pieces

* For detailed information, please contact your local Canadian Solar sales and technical representatives.

TEMPERATURE CHARACTERISTICS

Specification	Data
Temperature Coefficient (Pmax)	-0.36 % / °C
Temperature Coefficient (Voc)	-0.28 % / °C
Temperature Coefficient (Isc)	0.05 % / °C
Nominal Module Operating Temperature	42 ± 3°C

PARTNER SECTION

